

Christie

Glasshouses & Garden Sheds



COLORSTEEL®

Zincalume®

100%
KIWI
MADE



ALLAN'S 15
YEAR TICK



THE GREAT KIWI GLASSHOUSE AND GARDEN SHED,
MANUFACTURED IN DUNEDIN SINCE 1912

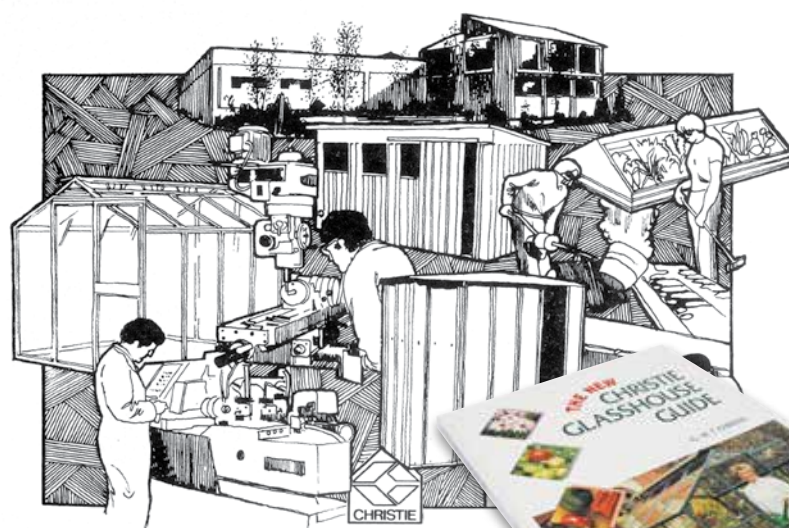


Christie Glasshouses to grow stuff in:



Kiwi-made since 1912

IN 1912, J&T CHRISTIE LIMITED produced its first glasshouse. Measuring approximately 18ft x 10ft (5.5 metres x 3.0 metres), it was custom-built for Mr W.A. Scott of Heriot Row, a Dunedin bicycle shop proprietor, and it was still growing food 70 years later.



NEWSPAPER AD GRAPHIC 1981

J&T Christie, which was founded as a plumbing contracting business in 1881, went on to become New Zealand's largest manufacturer of glasshouses – chances are your grandparents' glasshouse was a Christie. The company later added garden sheds and sheetmetal garden accessories to its range of quality products.

The Christie brand became respected by both home and commercial growers. In their first 100 years Christie Glasshouses were installed in many high profile locations, including Dunedin Botanic Garden, University of Otago Botany Department, agricultural institutions and research centres, forestry nurseries and the (now gone) T.J. Edmonds factory gardens in Christchurch, a photo of which graces the cover of the 'Edmonds Cookery Book'.

In 1968 the company began exporting with a shipment of 100,000 metal garden stakes going to Great Britain and the first glasshouses to Australia. In 1978, a New Zealand missionary determined to promote New Zealand-made products in Japan initiated the sale of Christie Glasshouses in that country. Christie also exported tens of thousands of mini glasshouses throughout Australia, Asia and the Pacific.

J&T Christie was a company of innovators determined to help its customers get the best from the glasshouses it made. In 1968 it published the 'Christie Glasshouse Guide', a comprehensive 144 page book which was the first of its kind to be especially written for New Zealand and Australian conditions. The book provided a down-to-earth, month-by-month guide on all aspects of glasshouse culture. The last edition was published in 1996.

In 2012 the Christie business was taken under the wing of Allan's Engineering and Sheetmetal Services Limited of Dunedin, where it continues to manufacture the great kiwi Christie range.

Christie Garden Sheds to keep stuff in:





Christie quality

CHRISTIE HAS BEEN THE FIRST CHOICE of New Zealand and Australian gardeners for over 100 years. That's because when you buy Christie you know you are buying quality based on the traditional family values of providing top value for money. Christie Glasshouse and Garden Sheds are made to last!

Christie Glasshouse and Garden Sheds are built to withstand extreme weather conditions and years of hard work. They are made in Allan's Dunedin workshop by a dedicated team of sheetmetal engineers who choose to build in heavy gauge Zincalume or Colorsteel. Allan's guarantee their workmanship and materials for 15 years – Allan's 15 Year Tick – which is subject to a range of fair play conditions supplied in writing with your purchase.

Christie garden buildings come in a range of nature-inspired Colorsteel colours, or metallic Zincalume.

The Christie range of quality products includes:

- Glasshouses – freestanding and lean-to
- Mini Glasshouses
- Garden Sheds
- Aviaries, wood sheds and rural bus shelters
- Planter boxes, stands, shelf brackets and benches.



Christie Glasshouses



A CHRISTIE GLASSHOUSE WILL ADD VALUE to your property and increase your gardening pleasure. You will extend your growing season, grow more food faster and grow a much larger variety of produce than you can outdoors. "I planted the same corn at the same time... some outdoors and some in my new Christie Glasshouse. The corn in the glasshouse was ready to eat weeks ahead of the outdoor plants" – Marie Ann, Dunedin.

A Christie Glasshouse provides you with an indoor micro-climate that is more conducive for growing plants than outdoors. Temperatures inside a Christie Glasshouse are considerably warmer, there's no wind or surface frost, and you can control the ventilation with the advanced design Christie roof vents. The glasshouse is easy to irrigate with a common garden sprinkler, dripline, soaker hose or mini irrigator.

You will be amazed at what you can grow, even in the most challenging southern or high country climates. Chillies, capsicum, cucumber, lettuce, kumara and hot climate herbs like basil and coriander. Mushrooms, grapes and many exotic flower species also thrive in the micro-climate of a Christie Glasshouse. And of course, the quintessential tomato!

Insist on Christie quality:

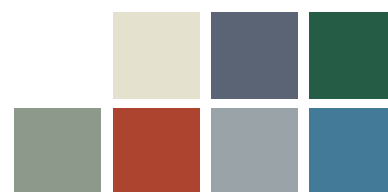
- Long life, heavy gauge Zinalume or Colorsteel
- Braced to withstand severe wind conditions
- Glass panels proven to have superior long life, transparency, insulation and strength over plastic
- Panes easy to replace if damaged
- Full length lifting vents and easy-glide door
- Lean-to options with all-wall or end-wall doors
- Thirty six nature-inspired Colorsteel colours, or metallic Zinalume finish
- Options available: auto vent openers, wall vents, guttering, retractable shade cloth and models custom-built to your design and specifications
- Pre-assembled in sections, or DIY with easy to follow instructions and all hardware
- Macrocarpa timber foundation recommended.



SUPERIOR GLASS PANELS



**ALLAN'S 15
YEAR TICK**

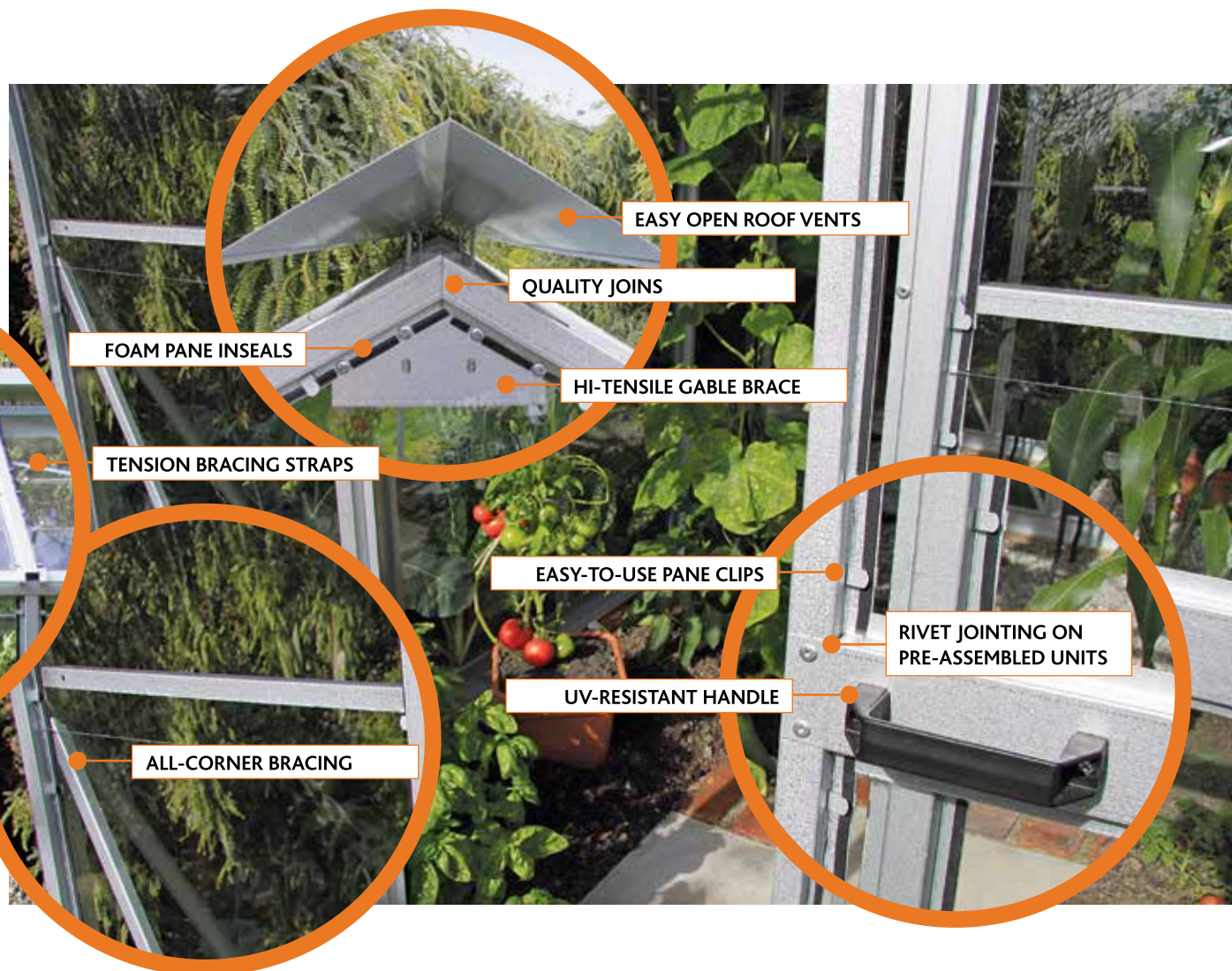


COLORSTEEL®
Zinalume®



For extremely sunny environments, Christie has the option of a retractable shade cloth which you simply roll-out/roll-in according to the conditions.





There's a Christie Glasshouse to suit your garden and growing ambitions

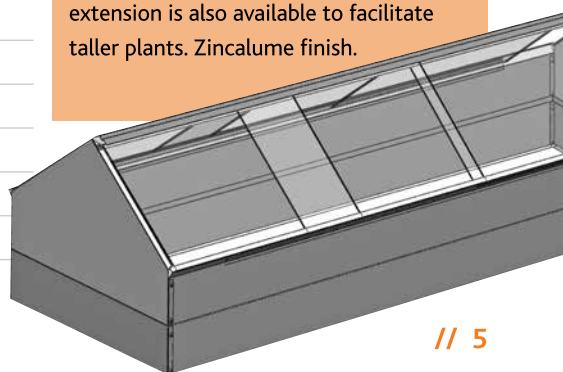
Model	Doors	Width	Length	Height range
Budget 1218	2	1205	1805	1805-1530
Regency 1818	1	1805	1805	2075-1555
Regency 1824	1	1805	2413	2075-1555
Regency 1836	1	1805	3605	2075-3605
Regal 2424	2	2400	2400	2245-1555
Regal 2436	2	2400	3605	2245-1555
Regal 2448	2	2400	4800	2245-1555
Sovereign 2460	2	2400	6000	2245-1555
Sovereign 2472	2	2400	7200	2245-1555
Sovereign 3636	2	3600	3600	2595-1555
Sovereign 3648	2	3600	4800	2595-1555
Sovereign 3660	2	3600	6000	2595-1555
Sovereign 3672	2	3600	7200	2595-1555
Argyle Lean-to 618	3*	625	1800	2220-1715
Argyle Lean-to 1818	3*	1800	1800	2220-1715
Argyle Lean-to 1824	3*	1800	2400	2220-1715
Argyle Lean-to 2424	1†	2400	2400	2375-1715
Argyle Lean-to 2436	1†	2400	3605	2375-1715

* All-wall sliding door system. † End-wall door system.

CHRISTIE MINI-GLASSHOUSES are ideal for home gardeners who want the benefits of glasshouse growing but on a smaller scale. Lettuces, dwarf tomatoes, mushrooms, French beans and other vegetable and flower crops thrive under the easy-glide glass covers.

A Christie Mini-glasshouse is also the perfect environment to propagate seeds. The extra warmth and wind shelter give seeds a huge head start. A Christie Mini-glasshouse also protects your seed bed from birds, cats and dogs. Seedlings are pricked-out when ready for planting.

Length 1500mm x width 580mm x peak height 330mm. A 110mm height extension is also available to facilitate taller plants. Zincalume finish.



Christie Garden Sheds



THE GREAT KIWI SHED comes in all shapes and sizes, and the kiwi shed that has stood the test of time is Christie. Christie Garden Sheds have been manufactured in Dunedin for over 50 years to provide New Zealand gardeners (and hoarders) somewhere safe to keep their 'stuff'. Christie Garden Sheds are also proven as wood sheds, bus shelters for country kids, aviaries, hen houses, and for the bundled storage of farm chemicals.

A Christie Garden Shed is a brilliant addition to your backyard adding to your storage capacity – you can finally clear-out the garage and park your car in it.

Christie Garden Sheds provide a weatherproof and secure facility. A padlock system can be used on the door latch to keep out wannabe thieves. And hazardous substances and potentially dangerous equipment can also be safely locked away from curious children.

Insist on Christie quality:

- Long life, heavy gauge, roofing quality Zincalume or Colorsteel
- Braced to withstand severe wind conditions

- Two roof design options – sloping or gabled
- Roof guttering standard on all models
- Secure design with lockable door latch system
- Choice of single or double easy-slide doors
- A range of nature-inspired Colorsteel colours, or metallic Zincalume finish
- Optional extras include windows, clearsheet skylight, shelf brackets and work benches
- Pre-assembled in sections, or DIY with easy to follow instructions and all hardware
- Your choice of concrete with anchor bolts, or wooden flooring (not included).



**ALLAN'S 15
YEAR TICK**

COLORSTEEL® Zincalume®

Christie Accessories



GET MORE FROM YOUR CHRISTIE Glasshouse and Garden Shed with top quality Christie shelving brackets, work benches, staging and planter boxes. Staging in your glasshouse adds a new dimension, providing the perfect tiered platform for plant propagation or just "pottering".

A Christie Accessory has a Zincalume long-life, non-rust finish. Visit the Allan's website for full details on the many sizes available.



**ALLAN'S 15
YEAR TICK**

Zincalume®



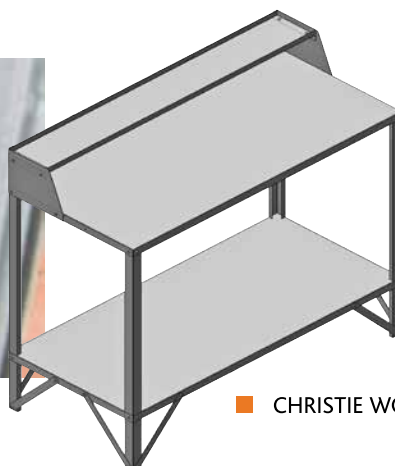
■ CHRISTIE TIERED STAGING



There's a Christie Garden Shed to increase your storage capacity					
Model	Roof	Doors (width)	Width	Length	Height range
Utility 0815	Sloping	1 (740mm)	820	1585	1950-1850
Utility 1515	Sloping	1 (740mm)	1585	1585	1950-1850
Utility 1523	Sloping	1 (740mm)	1585	2355	1950-1850
Workshop 2323	Gable	1 (740mm)	2355	2355	2010-1850
Workshop 2331	Gable	2 (1500mm)	2355	3125	2010-1850
Workshop 2338	Gable	2 (1500mm)	2355	3895	2010-1850
Workshop 2346	Gable	2 (1500mm)	2355	4665	2010-1850
Workshop 3131	Gable	2 (1500mm)	3125	3125	2010-1850



CHRISTIE PLANTER BOXES



CHRISTIE WORK BENCH

A Christie Glasshouse will add
a new dimension to your garden



DESIGNED AND MANUFACTURED BY:

ALLAN'S RETAIL PARTNER:



Location 1 Thomas Burns Street
Dunedin 9016, New Zealand
Postal PO Box 49, Dunedin 9054
Email admin@allans.co.nz
Phone (03) 477-7909
Freephone 0800-ALLANS (0800-255267)
www.allans.co.nz

Engineering / Sheetmetal / Long Run Roofing / Scaffolding / Christie Glasshouse and Garden Sheds / Ecomax Boilers